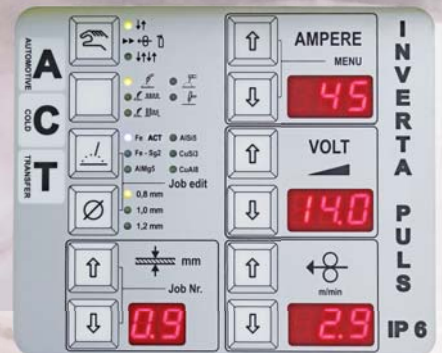
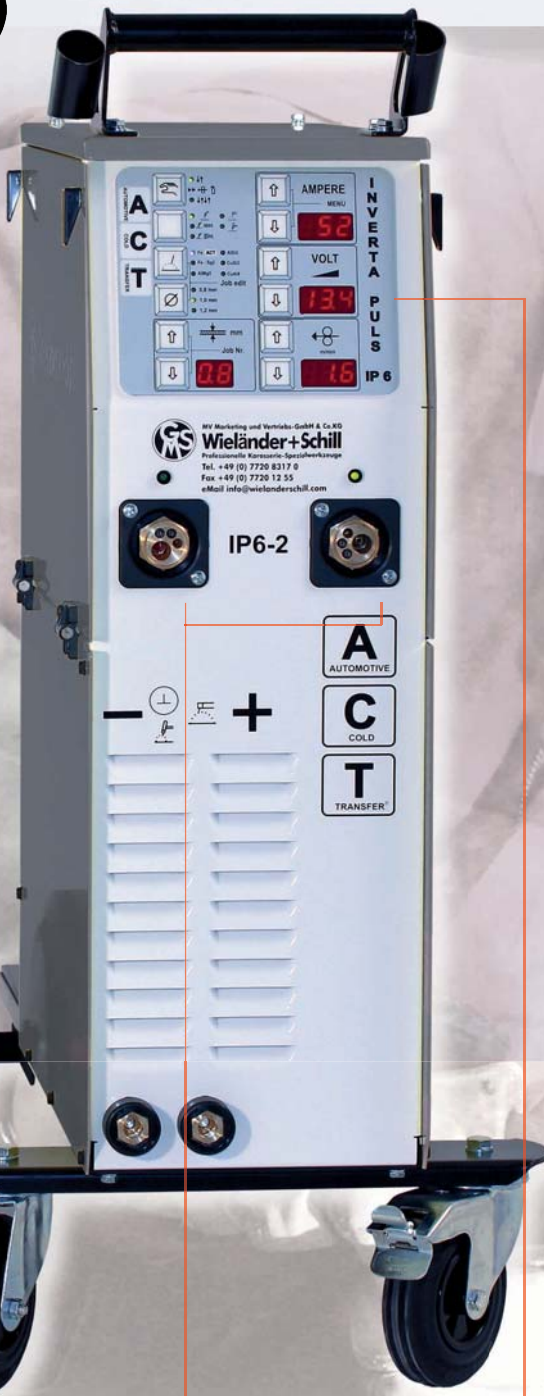


Inverter MIG-Welder for aluminium welding, MIG brazing steel welding, MAG welding and **thin sheet welding**



outstanding

- ACT*
- Less heat input
 - Excellent in bridging wide gaps
 - Less material distortion
 - Less reworking
 - Higher welding speed



ACT-Mode



Steel (SG2)-Mode

Item N° 331007**
3 x 400V

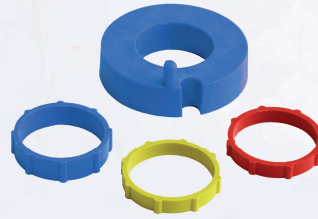
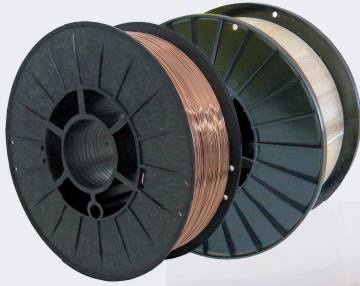
Item N° 332007**
3 x 220V

Automatic torch recognition

Automatic „Hold-Function“ for welding parameters

Storage for individual welding programs

Interface (USB/Serial) for software updates



Adapter for wire coil D-200
 item N° 307004



Welding protection
 helmet WS07
 item N° 881047

Welding wire - D-200 coils

item N°	description	Ø	weight / coil
311074	SG2 TIVB	0,8 mm	5 kg
311075	SG2 TIVB	1,0 mm	5 kg
311082	SG2	0,8 mm	5 kg
311076	AlMg5	1,0 mm	2 kg
311077	AlMg5	1,2 mm	2 kg
311078	AlSi5	1,0 mm	2 kg
311079	AlSi5	1,2 mm	2 kg
311080	AlSi12	1,0 mm	2 kg
311072	AlBz8 / CuAl8	0,8 mm	5 kg
311073	AlBz8 / CuAl8	1,0 mm	5 kg
311070	CuSi3	0,8 mm	5 kg
311071	CuSi3	1,0 mm	5 kg



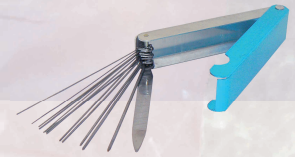
Welding protective gloves
 Item N° 881036



Protection blankets set 3 pcs.
 Item N° 882001



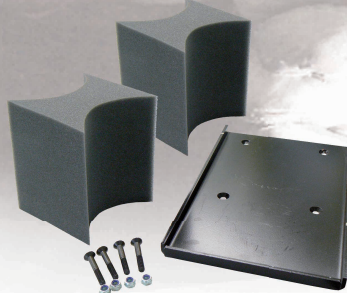
Special pliers - 4 functions
 Item N° 311041



Torch nozzle cleaner Set
 Item N° 311040



IP6-2 and gas bottle are not included.



Sheet adapter for 2 gas bottle
 Item N° 311045

**** Item supplied:**

- 1 control unit IP6-2 ACT 3x400V (3x220V)
- 2 set of wire feed rolls for steel 0,8 / 1,0 mm
- 1 set of wire feed rolls for alu 1,0/1,2 mm
- 1 steel torch 3G blue, 3m for steel welding
- 1 aluminium torch 3G black, 3m for alu-welding
- 1 earth cable
- 1 double splitter valve
- 1 instruction manual